

Jörn Michael Borner

For Years

Eingespielt auf der CD „Thoughts ...unspoken“ (Inner Light Music)
von Michael Borner

For Years

Jörn Michael Börner

8

IV

8

8

8

8

8

8

This page contains seven systems of musical notation for guitar, each consisting of a treble and bass staff. The notation includes various musical symbols such as notes, rests, accidentals, and fingering numbers. Roman numerals XI, X, and XIV are used to label specific sections. Circled numbers 1 through 6 are placed below the bottom staff in several systems. The page is numbered 3 in the bottom right corner.

System 1: Treble staff has a measure with a whole note G4 (fingering 2) and a measure with a whole note B4 (fingering 4). Bass staff has a measure with a whole note G3 (fingering 2) and a measure with a whole note B3 (fingering 4). Roman numeral XI is above the first measure of the bass staff.

System 2: Treble staff has a measure with a whole note G4 (fingering 2) and a measure with a whole note B4 (fingering 4). Bass staff has a measure with a whole note G3 (fingering 2) and a measure with a whole note B3 (fingering 4). Roman numeral X is above the first measure of the bass staff.

System 3: Treble staff has a measure with a whole note G4 (fingering 2) and a measure with a whole note B4 (fingering 4). Bass staff has a measure with a whole note G3 (fingering 2) and a measure with a whole note B3 (fingering 4). Roman numeral XIV is above the first measure of the bass staff.

System 4: Treble staff has a measure with a whole note G4 (fingering 2) and a measure with a whole note B4 (fingering 4). Bass staff has a measure with a whole note G3 (fingering 2) and a measure with a whole note B3 (fingering 4).

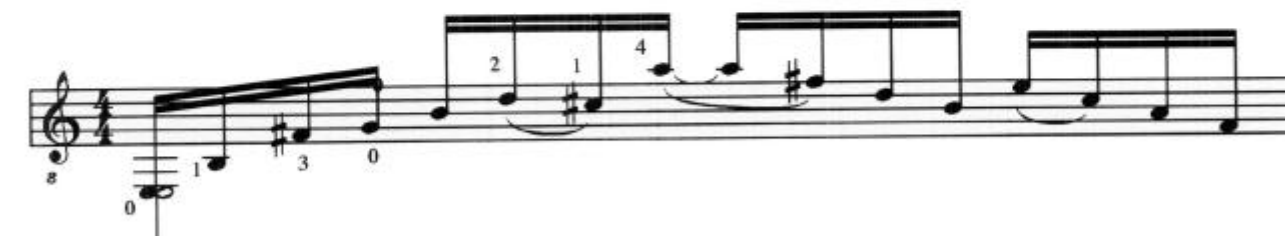
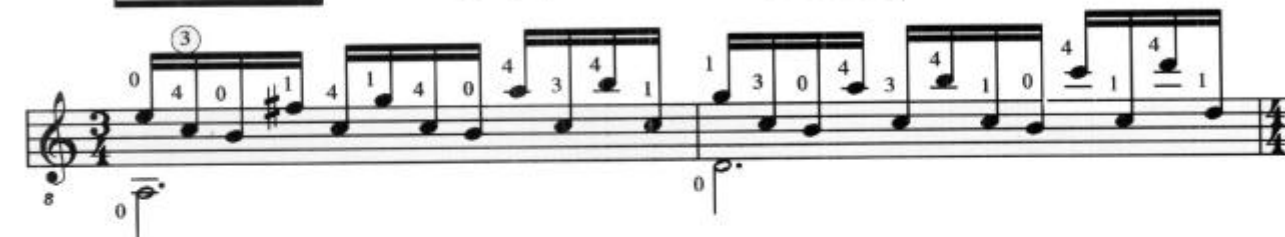
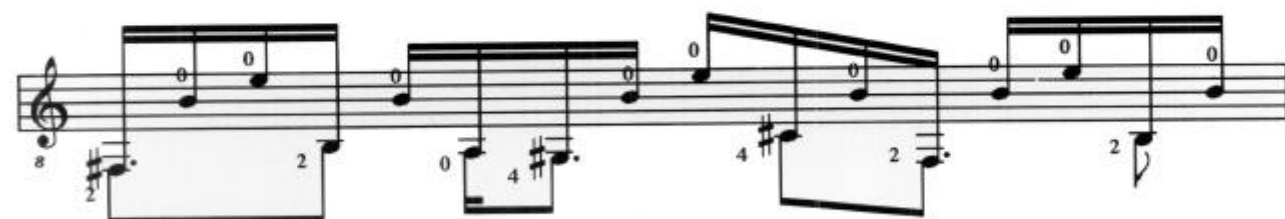
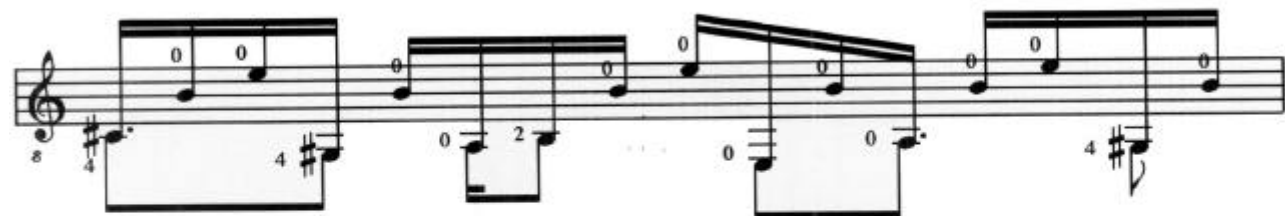
System 5: Treble staff has a measure with a whole note G4 (fingering 2) and a measure with a whole note B4 (fingering 4). Bass staff has a measure with a whole note G3 (fingering 2) and a measure with a whole note B3 (fingering 4).

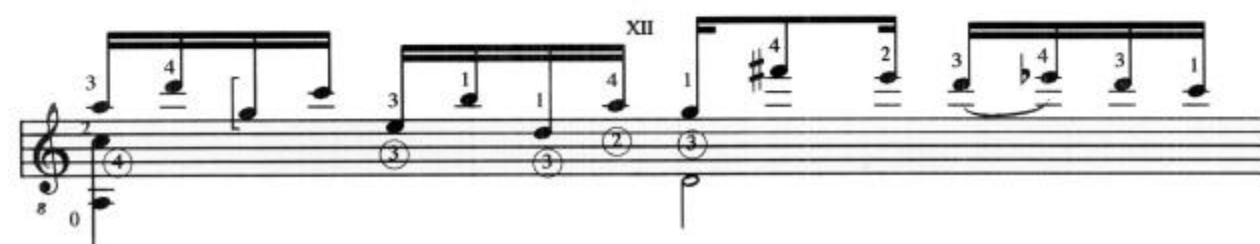
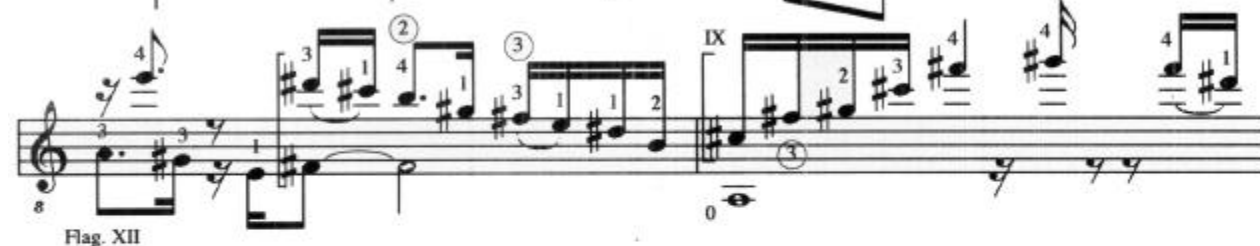
System 6: Treble staff has a measure with a whole note G4 (fingering 2) and a measure with a whole note B4 (fingering 4). Bass staff has a measure with a whole note G3 (fingering 2) and a measure with a whole note B3 (fingering 4).

System 7: Treble staff has a measure with a whole note G4 (fingering 2) and a measure with a whole note B4 (fingering 4). Bass staff has a measure with a whole note G3 (fingering 2) and a measure with a whole note B3 (fingering 4).

The page is numbered 3 in the bottom right corner.







The image displays a page from a guitar method book, featuring six staves of musical notation. The music is written in treble clef with a key signature of one sharp (F#) and a 3/4 time signature. The first staff begins with a section marked 'VII'. The second staff contains a section marked 'IV'. Throughout the piece, various musical elements are present, including eighth notes, quarter notes, and half notes, often grouped in beams. Fingering instructions (numbers 1 through 4) are placed above specific notes. Dynamic markings, such as 'p' (piano), are used to indicate volume. The piece ends with the instruction 'D.S. al Fine'.